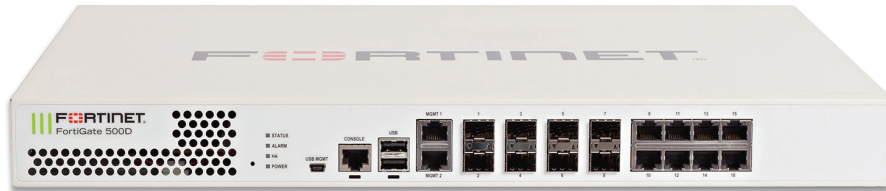


# FortiGate® 500D



The Fortinet Enterprise Firewall Solution delivers end-to-end network security with one platform, one network security operating system and unified policy management with a single pane of glass — for **the industry's best protection against the most advanced security threats and targeted attacks.**



## Security Fabric Integration

FortiGate appliances, interconnected with the Fortinet Security Fabric, form the backbone of the Fortinet Enterprise Solution.



## Deployment Modes

Next Generation Firewall  
Internal Segmentation Firewall



## Hardware Acceleration

SPU NP6 and CP8



**16 Gbps**  
*Firewall*

**6 Million**  
*Concurrent Sessions*



**3.5 Gbps**  
*IPS*



**2.5 Gbps**  
*NGFW*



**2 Gbps**  
*Threat Protection*



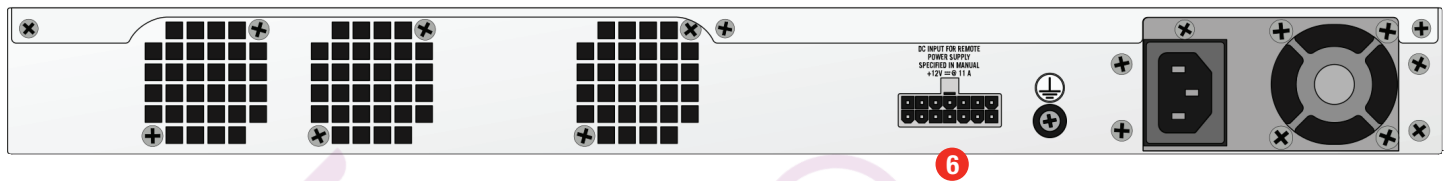
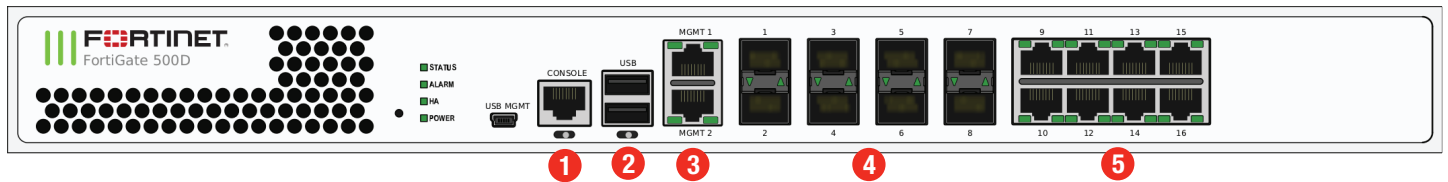
Multiple GE RJ45 and GE SFP slots

## Third-Party Certifications



## HARDWARE

### FortiGate 500D



### Interfaces

- |   |  |
|---|--|
| <ol style="list-style-type: none"> <li>1. Console Port (RJ45)</li> <li>2. 2x USB Ports</li> <li>3. 2x GE RJ45 Management Ports</li> </ol> | <ol style="list-style-type: none"> <li>4. 8x GE SFP Slots</li> <li>5. 8x GE RJ45 Ports</li> <li>6. FRPS Connector</li> </ol> |
|---|--|

### Powered by SPU



- Custom SPU processors deliver the power you need to detect malicious content at multi-Gigabit speeds
- Other security technologies cannot protect against today's wide range of content- and connection-based threats because they rely on general-purpose CPUs, causing a dangerous performance gap
- SPU processors provide the performance needed to block emerging threats, meet rigorous third-party certifications, and ensure that your network security solution does not become a network bottleneck

### Network Processor

Fortinet's new, breakthrough SPU NP6 network processor works inline with FortiOS functions delivering:

- Superior firewall performance for IPv4/IPv6, SCTP and multicast traffic with ultra-low latency down to 2 microseconds
- VPN, CAPWAP and IP tunnel acceleration
- Anomaly-based intrusion prevention, checksum offload and packet defragmentation
- Traffic shaping and priority queuing

### Content Processor

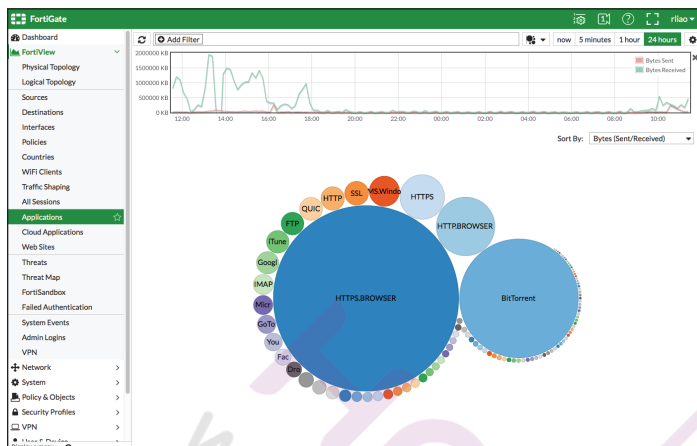
The SPU CP8 content processor works outside of the direct flow of traffic, providing high-speed cryptography and content inspection services including:

- Signature-based content inspection acceleration
- Encryption and decryption offloading

## SOFTWARE

### FortiOS

Control all the security and networking capabilities across the entire FortiGate platform with one intuitive operating system. Reduce operating expenses and save time with a truly consolidated next generation security platform.



- A truly consolidated platform with one OS for all security and networking services for all FortiGate platforms.
- Industry-leading protection: NSS Labs Recommended, VB100, AV Comparatives and ICSA validated security and performance.
- Control thousands of applications, block the latest exploits, and filter web traffic based on millions of real-time URL ratings.
- Detect, contain and block advanced attacks automatically in minutes with integrated advanced threat protection framework.
- Solve your networking needs with extensive routing, switching, WiFi, LAN and WAN capabilities.
- Activate all the SPU-booster capabilities you need on the fastest firewall platform available.



For more information, please refer to the FortiOS data sheet available at [www.fortinet.com](http://www.fortinet.com)

## SERVICES

### FortiGuard™ Security Services

FortiGuard Labs offers real-time intelligence on the threat landscape, delivering comprehensive security updates across the full range of Fortinet's solutions. Comprised of security threat researchers, engineers, and forensic specialists, the team collaborates with the world's leading threat monitoring organizations, other network and security vendors, as well as law enforcement agencies:

- **Real-time Updates** — 24x7x365 Global Operations research security intelligence, distributed via Fortinet Distributed Network to all Fortinet platforms.
- **Security Research** — FortiGuard Labs have discovered over 170 unique zero-day vulnerabilities to date, totaling millions of automated signature updates monthly.
- **Validated Security Intelligence** — Based on FortiGuard intelligence, Fortinet's network security platform is tested and validated by the world's leading third-party testing labs and customers globally.

### FortiCare™ Support Services

Our FortiCare customer support team provides global technical support for all Fortinet products. With support staff in the Americas, Europe, Middle East and Asia, FortiCare offers services to meet the needs of enterprises of all sizes:

- **Enhanced Support** — For customers who need support during local business hours only.
- **Comprehensive Support** — For customers who need around-the-clock mission critical support, including advanced exchange hardware replacement.
- **Advanced Services** — For global or regional customers who need an assigned Technical Account Manager, enhanced service level agreements, extended software support, priority escalation, on-site visits and more.
- **Professional Services** — For customers with more complex security implementations that require architecture and design services, implementation and deployment services, operational services and more.



#### Enterprise Bundle

FortiGuard Labs delivers a number of security intelligence services to augment the FortiGate firewall platform. You can easily optimize the protection capabilities of your FortiGate with the FortiGuard Enterprise Bundle. This bundle contains the full set of FortiGuard security services plus FortiCare service and support offering the most flexibility and broadest range of protection all in one package.

# SPECIFICATIONS

| FORTIGATE 500D                                      |   |
|---|---|
| <b>Interfaces and Modules</b>                       |   |
| GE RJ45 Interfaces                                  | 8   |
| GE SFP Slots  | 8   |
| GE RJ45 Management Ports                            | 2   |
| USB (Client / Server)                               | 1 / 2                                     |
| RJ45 Console Port                                   | 1   |
| Local Storage                                       | 120 GB SSD                                |
| Included Transceivers                               | 2x SFP (SX 1 GE)                          |
| <b>System Performance and Capacity</b>              |   |
| Iv4 Firewall Throughput (1518 / 512 / 64 byte, UDP) | 16 / 16 / 16 Gbps                         |
| Firewall Latency (64 byte, UDP)                     | 3 μs                                      |
| Firewall Throughput (Packet per Second)             | 24 Mpps                                   |
| Concurrent Sessions (TCP)                           | 6 Million                                 |
| New Sessions/Second (TCP)                           | 250,000                                   |
| Firewall Policies                                   | 10,000                                    |
| IPsec VPN Throughput (512 byte)                     | 14 Gbps                                   |
| Gateway-to-Gateway IPsec VPN Tunnels                | 2,000                                     |
| Client-to-Gateway IPsec VPN Tunnels                 | 10,000                                    |
| SSL-VPN Throughput                                  | 400 Mbps                                  |
| Concurrent SSL-VPN Users (Recommended Maximum)      | 500                                       |
| IPS Throughput (HTTP / Enterprise Mix) <sup>1</sup> | 5.7 / 3.5 Gbps                            |
| SSL Inspection Throughput <sup>2</sup>              | 3 Gbps                                    |
| Application Control Throughput <sup>3</sup>         | 4 Gbps                                    |
| NGFW Throughput <sup>4</sup>                        | 2.5 Gbps                                  |
| Threat Protection Throughput <sup>5</sup>           | 2 Gbps                                    |
| CAPWAP Throughput <sup>6</sup>                      | 10 Gbps                                   |
| Virtual Domains (Default / Maximum)                 | 10 / 10                                   |
| Maximum Number of FortiAPs (Total / Tunnel)         | 512 / 256                                 |
| Maximum Number of FortiTokens                       | 1,000                                     |
| Maximum Number of Registered Endpoints              | 2,000                                     |
| High Availability Configurations                    | Active-Active, Active-Passive, Clustering |

| FORTIGATE 500D                                  |   |
|---|---|
| <b>Dimensions and Power</b>                     |   |
| Height x Width x Length (inches)                | 1.73 x 17 x 12.68   |
| Height x Width x Length (mm)                    | 44 x 432 x 322  |
| Weight  | 10.8 lbs (4.9 kg)   |
| Form Factor                                     | 1 RU  |
| Power Consumption (Average / Maximum)           | 113 W / 202 W   |
| Power Source                                    | 100–240V AC, 60–50Hz  |
| Current (Maximum)                               | 110V/4A, 220V/2A  |
| Heat Dissipation                                | 690 BTU/h   |
| <b>Operating Environment and Certifications</b> |   |
| Operating Temperature                           | 32–104°F (0–40°C)   |
| Storage Temperature                             | 31–158°F (-35–70°C)   |
| Humidity  | 20–90% non-condensing   |
| Operating Altitude                              | Up to 7,400 ft (2,250 m)  |
| Compliance                                      | FCC Part 15 Class A, C-Tick, VCCI, CE, UL/cUL, CB               |
| Certifications                                  | ICSA Labs: Firewall, IPsec, IPS, Antivirus, SSL-VPN; USGv6/IPv6 |

Note: All performance values are "up to" and vary depending on system configuration. IPsec VPN performance is based on 512 byte UDP packets using AES-256+SHA1. 1. IPS performance is measured using 1 Mbyte HTTP and Enterprise Traffic Mix. 2. SSL Inspection is measured with IPS enabled and HTTP traffic, using TLS v1.2 with AES256-SHA. 3. Application Control performance is measured with 64 Kbytes HTTP traffic. 4. NGFW performance is measured with IPS and Application Control enabled, based on Enterprise Traffic Mix. 5. Threat Protection performance is measured with IPS and Application Control and Malware protection enabled, based on Enterprise Traffic Mix. 6. CAPWAP performance is based on 1444 byte UDP packets.

For complete, up-to-date and detailed feature set, please refer to the Administration Handbook and FortiOS Datasheet.

## ORDER INFORMATION

| Product                            | SKU        | Description   |
|------------------------------------|------------|---|
| FortiGate 500D                     | FG-500D    | 10x GE RJ45 ports, 8x GE SFP slots, SPU NP6 and CP8 hardware accelerated, 120 GB onboard SSD storage.   |
| <b>Optional Accessories</b>        |            |   |
| External Redundant AC Power Supply | FRPS-100   | External redundant AC power supply for up to 4 units: FG-300C, FG-310B, FS-348B and FS-448B. Up to 2 units: FG-200B, FG-200D, FG-240D and FG-300D, FG-400D, FG-500D, FG-600D, FHV-500D, FDD-200B, FDD-400B, FDD-600B and FDD-800B |
| 1 GE SFP LX Transceiver Module     | FG-TRAN-LX | 1 GE SFP LX transceiver module for all systems with SFP and SFP/SFP+ slots.   |
| 1 GE SFP RJ45 Transceiver Module   | FG-TRAN-GC | 1 GE SFP RJ45 transceiver module for all systems with SFP and SFP/SFP+ slots.   |
| 1 GE SFP SX Transceiver Module     | FG-TRAN-SX | 1 GE SFP SX transceiver module for all systems with SFP and SFP/SFP+ slots.   |



GLOBAL HEADQUARTERS  
Fortinet Inc.  
899 KIFER ROAD  
Sunnyvale, CA 94086  
United States  
Tel: +1.408.235.7700  
www.fortinet.com/sales

EMEA SALES OFFICE  
905 rue Albert Einstein  
06560 Valbonne  
France  
Tel: +33.4.8987.0500

APAC SALES OFFICE  
300 Beach Road 20-01  
The Concourse  
Singapore 199555  
Tel: +65.6395.2788

LATIN AMERICA SALES OFFICE  
Sawgrass Lakes Center  
13450 W. Sunrise Blvd., Suite 430  
Sunrise, FL 33323  
United States  
Tel: +1.954.368.9990